

Unveiling **Nature**
Wrapped *lifestyle*



MALABAR
DEVELOPERS

K/RERA/PRJ/164/2020

Orchid Park

SMARTER HOMES

PIDARAM | TRIVANDRUM







**MALABAR
DEVELOPERS**

MORE LIFE PER SQ FT

MAKING GOLDEN DREAMS REAL

Malabar Developers (P) Ltd., is the real-estate development division of Malabar Group that is into the construction of villas and apartments in different parts of the state, apart from the commercial projects spread all over India and abroad. Creating a superior living environment with commitment to quality is the bottom-line of the brand. Within a short span of time we have already completed many housing projects and still more are nearing completion. Further we have several ongoing projects of villas and apartments across the states and township projects within and outside the state. One of the finest property developers in Kerala, Malabar Developers has vowed to present innovative, efficient and cost effective solutions in residential and commercial spaces.

SMARTER HOMES COMMUNITY BY MALABAR DEVELOPERS

The perfect blend of community living and unrivalled luxury. "It took an artist to visualize this dream. And now, this dream is yours to make home."



The image shows a large, modern entrance sign for Orchid Park. The sign is composed of two main parts: a large, rusted metal panel on the left and a grey concrete panel on the right. The rusted metal panel features the Malabar Developers logo (a stylized 'M' in a circle) at the top, followed by the text "Orchid Park" in a large, white, serif font. Below that, in a smaller white font, are the words "SMARTER HOMES" and "PIDARAM I TRIVANDRUM". The concrete panel on the right also features the Malabar Developers logo. A white car is driving on a paved road that passes through the entrance. The background is filled with lush green trees and a clear blue sky with some clouds. The overall scene is bright and sunny.

Orchid Park
SMARTER HOMES
PIDARAM I TRIVANDRUM



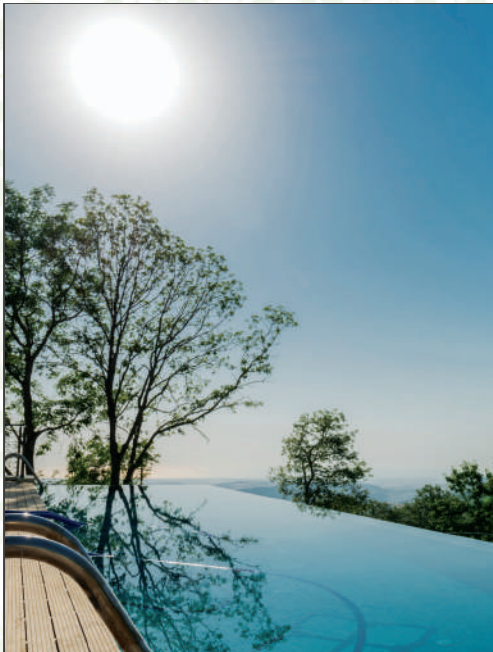


Orchid Park located at Pidaram in Trivandrum boasts of landscaped gardens and all the 21st century amenities. Having adopted the concept of 'NATURE-WRAPPED' homes, the project echoes green gardens throughout.

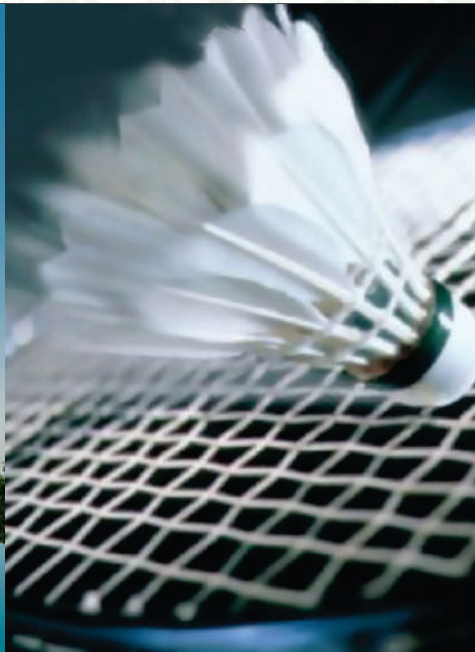
Orchid Park by Malabar developers introduces its first tower 'Red Orchid' for smarter living.

The family exclusive residential community houses 147 2&3-bedroom apartments offering a tranquil ambience and exquisite gardens.





SWIMMING POOL



BADMINTON



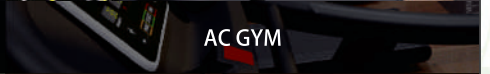
AC GYM



BASKETBALL COURT



KID'S PLAY AREA



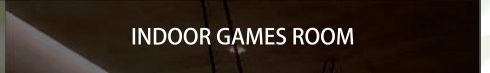
INDOOR GAMES ROOM



BASKETBALL COURT



KID'S PLAY AREA



INDOOR GAMES ROOM



BASKETBALL COURT



KID'S PLAY AREA



INDOOR GAMES ROOM



HELLO LIFE

Here at Orchid Park, you enjoy a world of amenities.

With a range of activities including **gym, badminton & basketball court, swimming pool, kid's play area and indoor** game room there's something for everyone making sure the fun and games never end. The landscaped gardens provide a scenic view for your evening walk, and great spots to entertain your guests. With spacious party lawns, pool-deck party area and more, now play the perfect host!

MEMBERSHIP PRIVILEGE

Here, if your address speaks Orchid Park, you instantly become a member. Not a resident? It's alright. We take non-residents too, with a membership fee for the clubhouse.



CLUB HOUSE



CONVENIENCE STORE



MULTI-PURPOSE HALL



HOME THEATRE



EXPERIENCE LIFE IN A CITY WITHIN A CITY

Secured community living facilities including paved roads with lights, along with amenities like convenience store, home theatre within the premises-**everything you need is right here.** Orchid Park is located at Pidaram in Trivandrum, keeping you well connected yet amid lush greenery.

“City outside, Tranquility inside”. It's time to live smart!



GROUND FLOOR PLAN

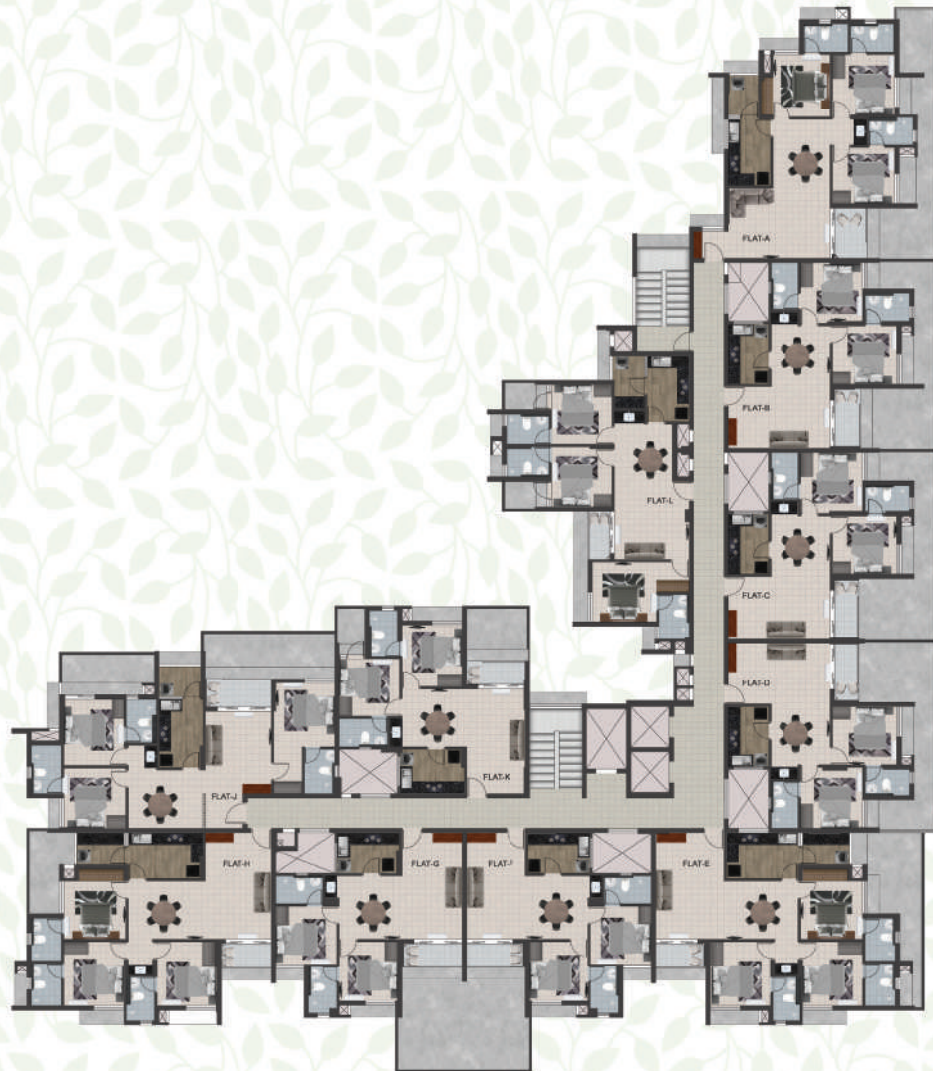
*Dimensions may vary slightly during construction.
*Furniture and fixtures are indicative only.
*All dimensions are in centimeters.
*Plans and areas are subjected to minor changes.





FIRST FLOOR PLAN

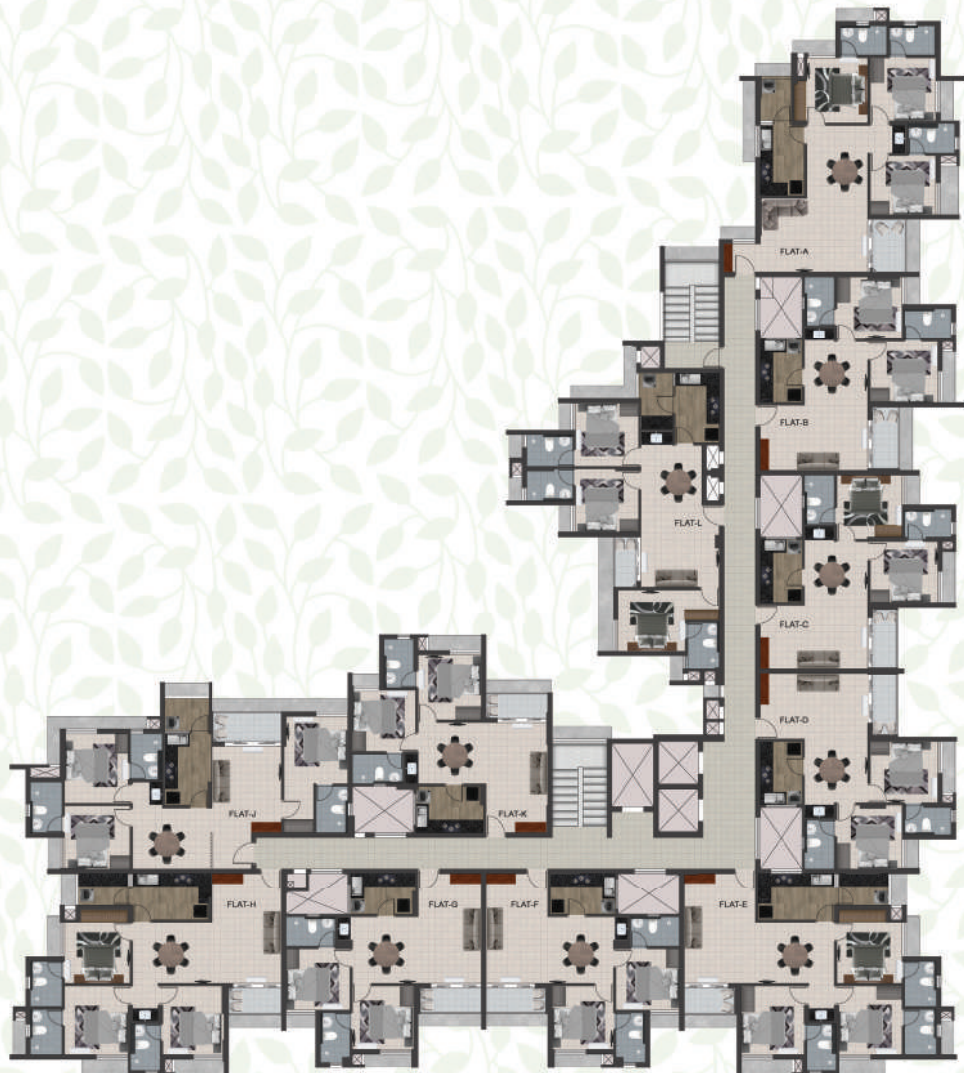
- *Dimensions may vary slightly during construction.
- *Furniture and fixtures are indicative only.
- *All dimensions are in centimeters.
- *Plans and areas are subjected to minor changes.



SECOND FLOOR PLAN

- *Dimensions may vary slightly during construction.
- *Furniture and fixtures are indicative only.
- *All dimensions are in centimeters.
- *Plans and areas are subjected to minor changes.





3RD TO 14TH FLOOR PLAN

*Dimensions may vary slightly during construction.
*Furniture and fixtures are indicative only.
*All dimensions are in centimeters.
*Plans and areas are subjected to minor changes.





FLAT-A (3BHK)

2ND TO 14TH FLOORS | AREA -1248 SQ.FT. | DECK AREA (2ND FLOOR) - 303 SQ.FT.

KEY PLAN



- *Dimensions may vary slightly during construction.
- *Furniture and fixtures are indicative only.
- *All dimensions are in centimeters.
- *Plans and areas are subjected to minor changes.





FLAT-B (2BHK)

2ND TO 14TH FLOORS | AREA - 893 SQ.FT. | DECK AREA (2ND FLOOR) - 275 SQ.FT.

KEY PLAN



- *Dimensions may vary slightly during construction.
- *Furniture and fixtures are indicative only.
- *All dimensions are in centimeters.
- *Plans and areas are subjected to minor changes.





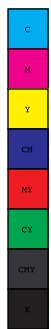
FLAT-C (2BHK)

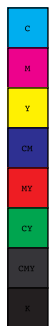
2ND TO 14TH FLOORS | AREA - 881 SQ.FT. | DECK AREA (2ND FLOOR) - 281SQ.FT.

KEY PLAN



*Dimensions may vary slightly during construction.
*Furniture and fixtures are indicative only.
*All dimensions are in centimeters.
*Plans and areas are subjected to minor changes.





FLAT-D (2BHK)

2ND TO 14TH FLOORS | AREA - 883 SQ.FT. | DECK AREA (2ND FLOOR) - 282 SQ.FT.

KEY PLAN



- *Dimensions may vary slightly during construction.
- *Furniture and fixtures are indicative only.
- *All dimensions are in centimeters.
- *Plans and areas are subjected to minor changes.





FLAT-E (3BHK)

1ST TO 14TH FLOORS AREA -1257 SQ.FT. DECK AREA (1ST FLOOR) - 276 SQ.FT.

KEY PLAN



- *Dimensions may vary slightly during construction.
- *Furniture and fixtures are indicative only.
- *All dimensions are in centimeters.
- *Plans and areas are subjected to minor changes.





FLAT-F (2BHK)

1ST TO 14TH FLOORS | AREA - 881 SQ.FT. | DECK AREA (1ST FLOOR) - 41 SQ.FT.

KEY PLAN



*Dimensions may vary slightly during construction.
 *Furniture and fixtures are indicative only.
 *All dimensions are in centimeters.
 *Plans and areas are subjected to minor changes.





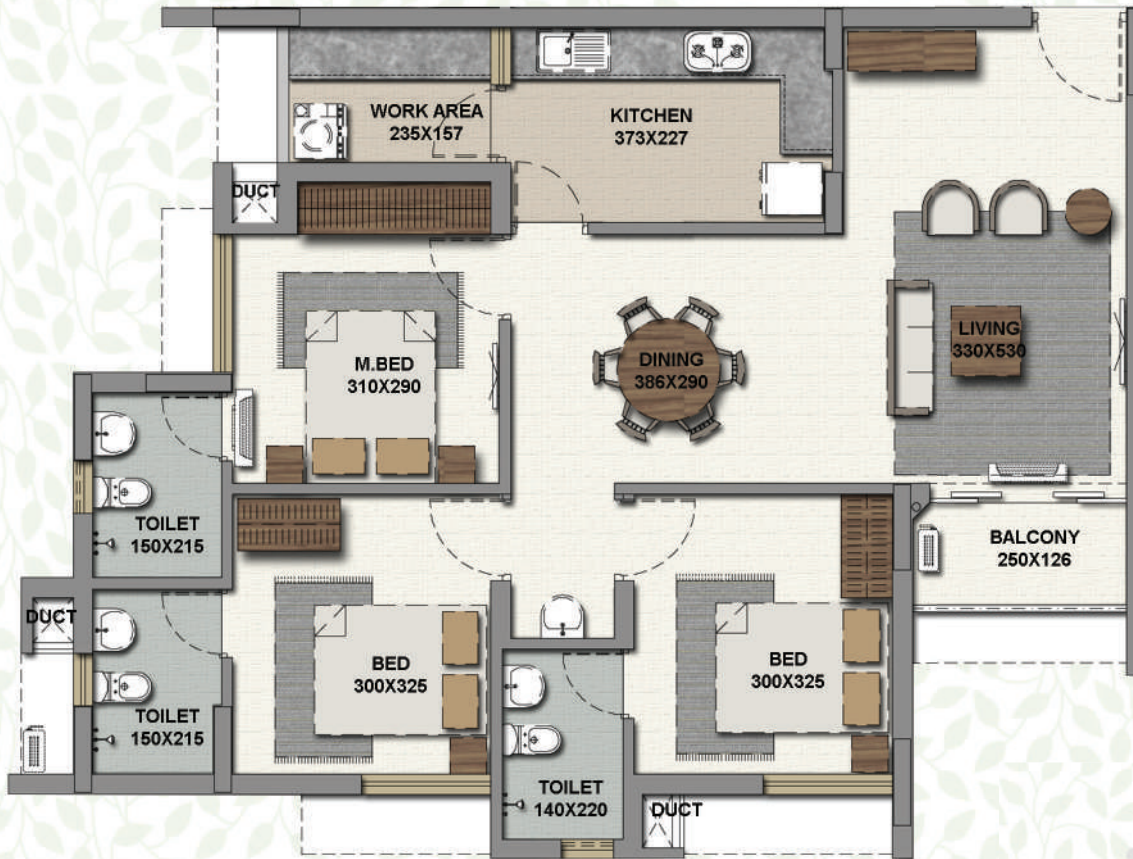
FLAT-G (2BHK)

1ST TO 14TH FLOORS | AREA - 881 SQ.FT. | DECK AREA (1ST FLOOR) - 41 SQ.FT.

KEY PLAN



*Dimensions may vary slightly during construction.
*Furniture and fixtures are indicative only.
*All dimensions are in centimeters.
*Plans and areas are subjected to minor changes.



FLAT-H (3BHK)
 1ST TO 14TH FLOORS | AREA -1251 SQ.FT. | DECK AREA (1ST FLOOR) - 153 SQ.FT.

KEY PLAN



*Dimensions may vary slightly during construction.
 *Furniture and fixtures are indicative only.
 *All dimensions are in centimeters.
 *Plans and areas are subjected to minor changes.





FLAT-J (3BHK)

2ND TO 14TH FLOORS | AREA -1273 SQ.FT. | DECK AREA (2ND FLOOR) - 248 SQ.FT.

KEY PLAN



*Dimensions may vary slightly during construction.
*Furniture and fixtures are indicative only.
*All dimensions are in centimeters.
*Plans and areas are subjected to minor changes.





FLAT-K (2BHK)

2ND TO 14TH FLOORS | AREA - 903 SQ.FT. | DECK AREA (2ND FLOOR) - 135 SQ.FT.

KEY PLAN



- *Dimensions may vary slightly during construction.
- *Furniture and fixtures are indicative only.
- *All dimensions are in centimeters.
- *Plans and areas are subjected to minor changes.





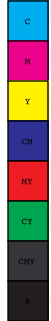
FLAT-L (3BHK)

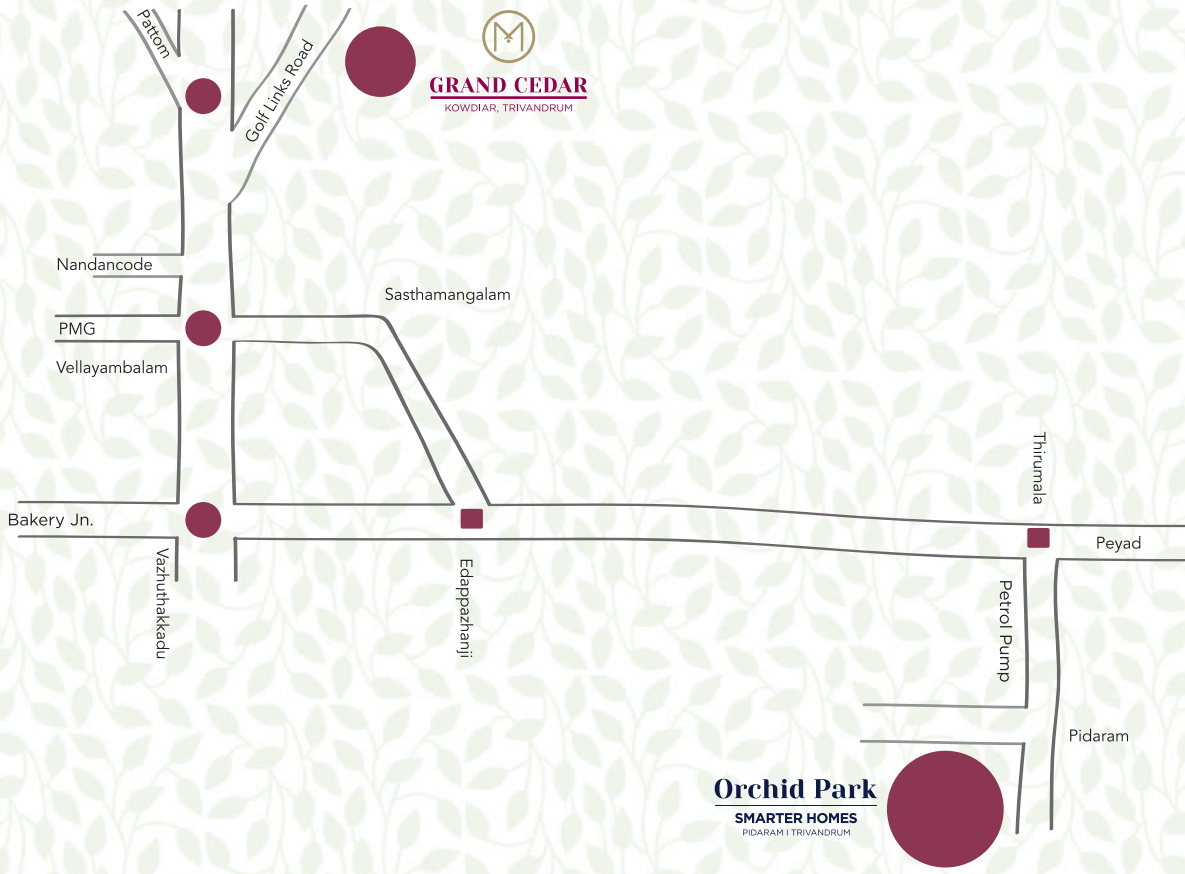
2ND TO 14TH FLOORS | AREA -1162 SQ.FT. | DECK AREA (2ND FLOOR) - 72 SQ.FT.

KEY PLAN



*Dimensions may vary slightly during construction.
 *Furniture and fixtures are indicative only.
 *All dimensions are in centimeters.
 *Plans and areas are subjected to minor changes.






LOCATION MAP

Orchid Park
 SMARTER HOMES
 PIDARAM | TRIVANDRUM


GRAND CEDAR
 KOWDIAR, TRIVANDRUM



SPECIFICATION

FLOORING

Living / dining	:	Vitrified tiles
Bedrooms	:	Vitrified tiles
Kitchen	:	Anti skid ceramic tiles
Work Area	:	Anti skid ceramic tiles
Balcony	:	Anti skid ceramic tiles
Toilets - Floor	:	Anti skid ceramic tiles
Toilet Wall Dado	:	Ceramic tiles upto 1.8 mtr

JOINERIES

Main Door	:	Moulded Doors
Internal Doors	:	Painted Panel Doors
Toilet Doors	:	Painted Panel Doors

ELECTRICAL

Switches	:	ABB/ Schneider or Equivalent
Hand Rails	:	MS Handrails with SS Top
Window Grills	:	MS

PLUMBING

CP Fittings	:	Jaguar/Parryware/Hindware or Equivalent
Sanitary	:	Parryware/Hindware or Equivalent

PAINTING

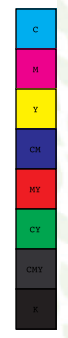
Wall	:	Paint, Distemper
Ceiling	:	Paint, Distemper
External	:	Water Proof Emulsion

WINDOWS

Ventilators	:	Powder Coated Aluminium
D/W	:	Powder Coated Aluminium

COMMON

Lobby	:	Vitrified Tiles
Lift	:	MS Painted Car & Painted door
Yard	:	Interlock Tiles
Common Area Floor	:	Vitrified Tiles
Power Back-Up	:	500 VA





Corporate Office:

Malabar Developers Pvt. Ltd. Malabar Group headquarters, Montana Estates,
Kuttikatoor, Peringolam PO, Calicut, Kerala 673 571, Ph: 9605000916, 9744053916

Administrative Office:

Malabar Developers Pvt. Ltd. Malabar Group headquarters, Montana Estates,
Kuttikatoor, Peringolam PO, Calicut, Kerala 673 571, Ph: 9605000916, 9744053916

Regional Office:

3rd floor, Mall of Travancore, Chackai bypass Road, Near International Airport
Trivandrum - 695 024, Ph: 07559999916, 9605000916

Thiruvananthapuram | Kottayam | Cochin | Thrissur | Malappuram | Kannur | Calicut | Dubai